

COVID-19 VACCINE FOR SOUTH DAKOTA RESIDENTS

Priority Groups for Phase 1

- + **Frontline Healthcare Workers** (working in an emergency department, ICU, COVID unit, or general acute care)
- + **Long-Term Care Facility Healthcare Workers**

A

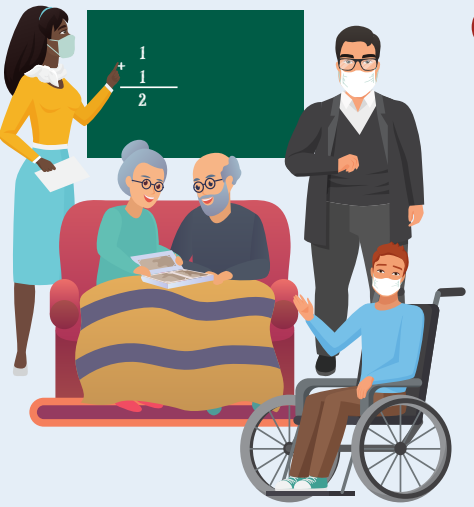


B

- + **Long-Term Care Residents** (nursing home and assisted living)

- + **Other healthcare workers, including laboratory and clinic staff**
- + **Public Health Workers**
- + **Emergency Medical Services**
- + **Law Enforcement**
- + **Correctional Officers**

C



D

- ### WE ARE CURRENTLY HERE
- + **Persons Aged 65 Years and Older**
 - + **High Risk Patients - dialysis, post-transplant, and active cancer**
 - + **High Risk Residents in Congregate Settings, Residents in Licensed Independent Living Facilities, and Residents of Licensed Group Homes**
 - + **Persons with underlying medical conditions under the age of 65**
 - + **Teachers and Other School/College Staff**
 - + **Funeral Service Workers**

- ### STARTING MARCH 22
- + **Fire Service Personnel**
 - + **Other Critical Infrastructure Workers, including water and wastewater, energy, finance, food service, food and agriculture, legal, manufacturing, shelter and housing, transportation and logistics, information technology and communications**
- [Click for More Information on Critical Infrastructure Sectors](#)

E



Due to limited allocation of the vaccine, the South Dakota Department of Health will use COVID-19 infection rates and will follow recommendations from the Advisory Committee on Immunization Practices (ACIP) to guide which counties will receive the vaccine first. Individuals qualifying for vaccination based on age or underlying health condition must be South Dakota residents.

Expected COVID-19 Vaccine Availability for South Dakota Residents

Phase	Population Group	January	February	March	April	May-December
1A	Frontline healthcare workers and long-term care facility healthcare workers					
1B	Long-term care residents					
1C	EMS, public health workers, and other healthcare workers (<i>lab & clinic staff</i>)					
	Law enforcement, correctional officers					
1D	Persons aged 65 years and older					
	High risk patients - dialysis, post-transplant, and active cancer					
	High risk residents in congregate settings					
	Persons with <u>underlying medical conditions</u> under the age of 65					
	Teachers and other school/college staff					
	Funeral service workers					
1E	Fire service personnel					
	Includes public-facing workers in essential and <u>critical infrastructure</u>					
Phase 2	All others 16 years and older					

We are here

 Estimated Vaccine Availability

Note: Tribal vaccine allocation & administration is handled by the [IHS](#)
 Veteran vaccine allocation & administration is handled by the [VA](#)

Due to limited allocation of the vaccine, the South Dakota Department of Health will use COVID-19 infection rates and will follow recommendations from the Advisory Committee on Immunization Practices (ACIP) to guide which counties will receive the vaccine first. Individuals qualifying for vaccination based on age or underlying health condition must be South Dakota residents.



SOUTH DAKOTA DEPARTMENT OF HEALTH

covid.sd.gov